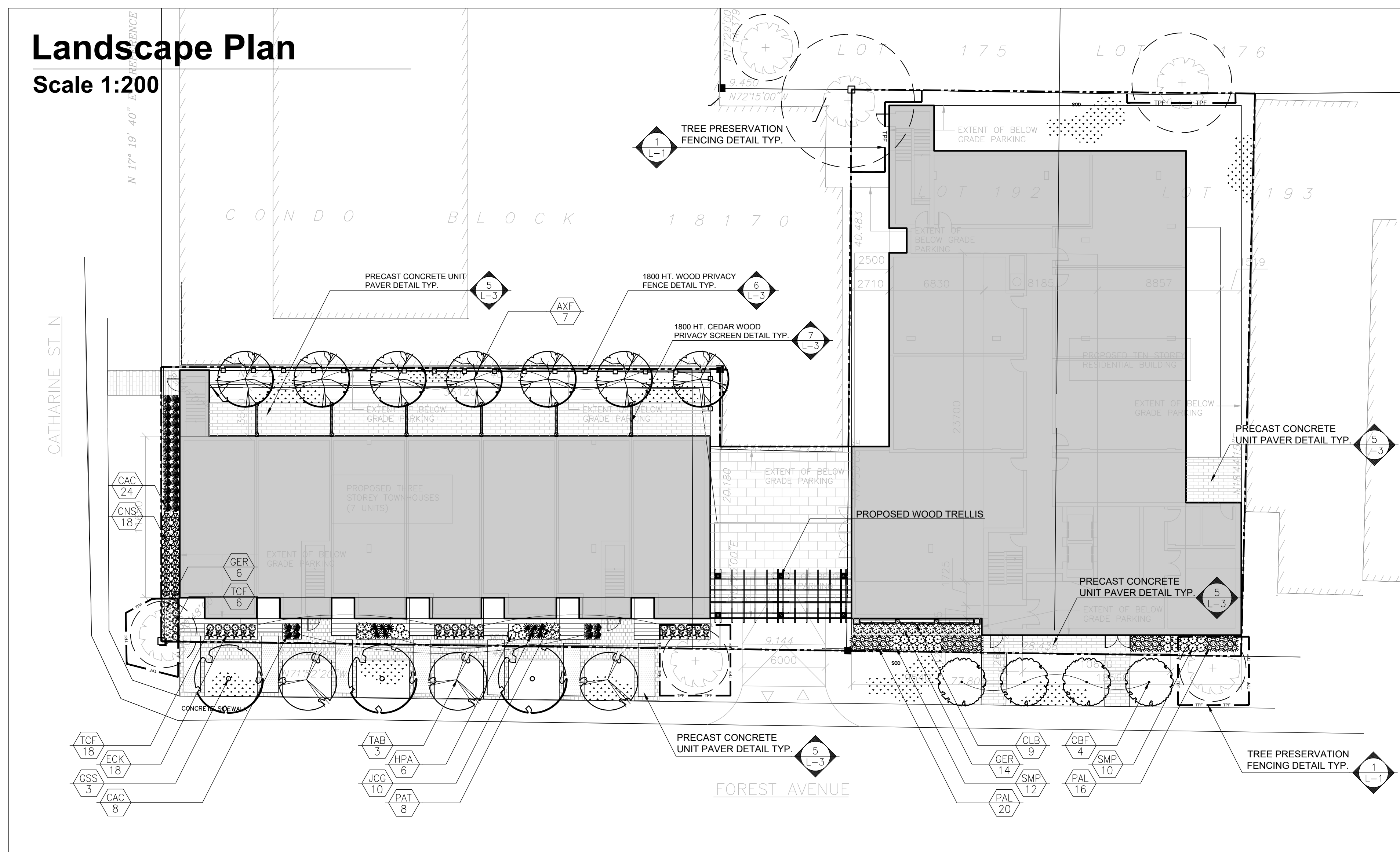


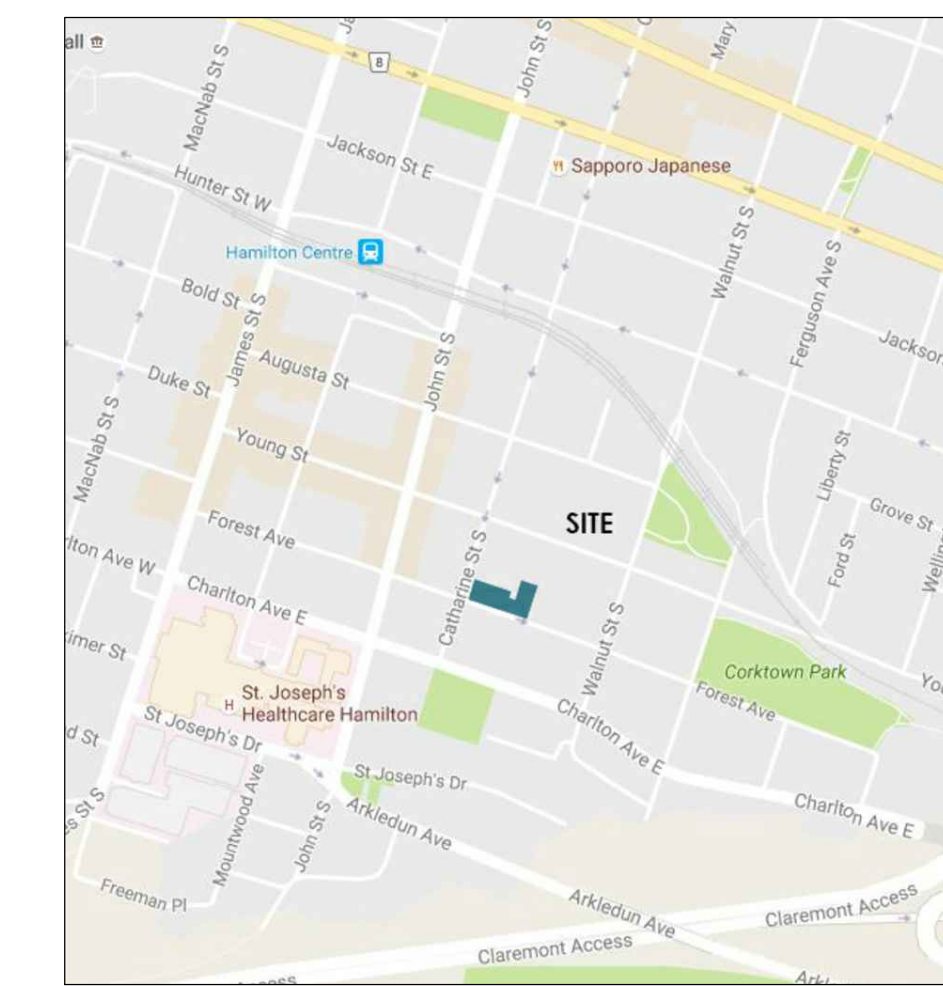
# Landscape Plan

Scale 1:200



## Legend

- Proposed Deciduous Tree
- Existing Tree to be Preserved
- Tree Protection Zone
- Proposed Shrubs and Perennials
- Tree Protection Fence
- Property Line
- Proposed Wood Privacy Fence
- Proposed Plant Material
- Detail Reference Key

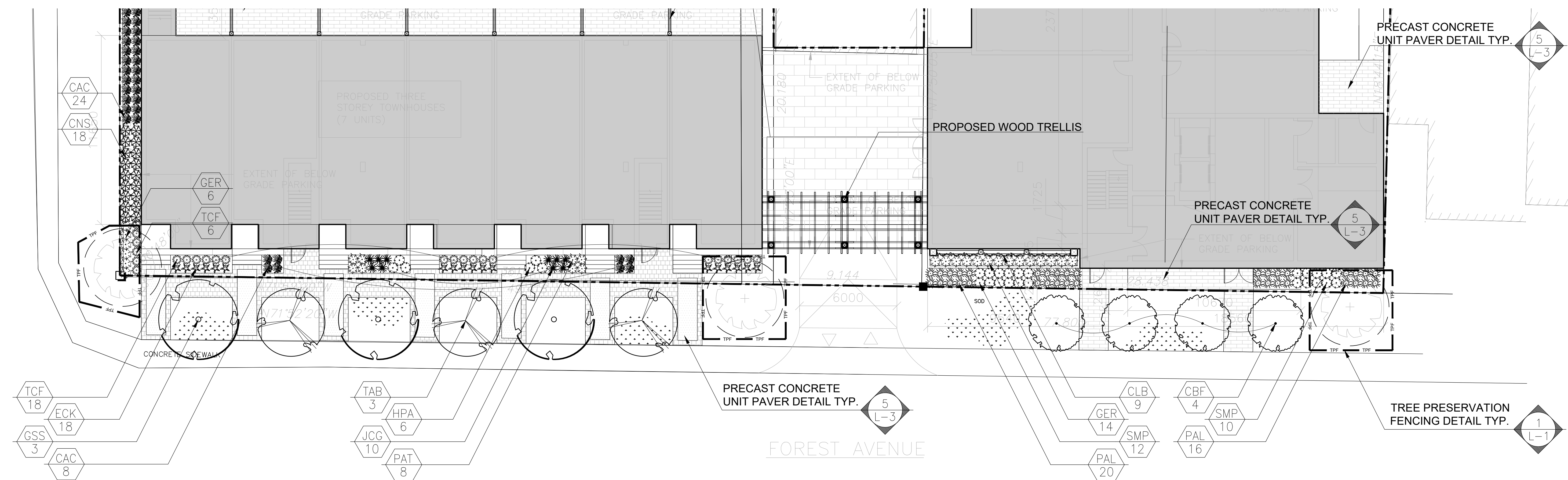


Key Map

## Suggested Plant List

KEY	QNTY	BOTANICAL NAME	COMMON NAME	HT/CAL	SPREAD	ROOT	REMARKS
<b>DECIDUOUS TREES</b>							
AXF		<i>Acer x freemanii</i>	Freeman Maple	70 mm		B.&B.	Full Form
CBF		<i>Carpinus betulus</i> 'Frans Fontaine'	Columnar Hornbeam	70 mm		B.&B.	Narrow Form
GSS		<i>Gleditsia triacanthos</i> var. <i>inermis</i> 'Draves'	Street Keeper Honey-Locust	70 mm		B.&B.	Full Form
TAB		<i>Tilia americana</i> 'Boulevard'	Boulevard Linden	70 mm		B.&B.	Full Form
<b>DECIDUOUS SHRUBS</b>							
CNS		<i>Cornus stolonifera</i>	Red Osier Dogwood	80 cm		B.&B.	Full Form
HPA		<i>Hydrangea paniculata</i> 'Forever Pink'	Dwarf Pink Hydrangea	60 cm		5 gal.	Full Form
SMP		<i>Syringa meyeri</i> 'Palibin'	Purple Dwarf Korean Lilac	60 cm		C.G.	Full Form
<b>CONIFEROUS SHRUBS</b>							
JCG		<i>Juniper chinensis</i> 'Gold Coast'	Gold Coast Juniper	70 cm		C.G.	Full Form
TCF		<i>Taxus cuspidata</i> 'Fairview'	Fairview Yew	65 cm		C.G.	Full Form
<b>PERENNIALS</b>							
ECK		<i>Echinacea purpurea</i> 'Kim's Knee High'	Dwarf Purple Cone Flower			2 Gal.	Full Form
GER		<i>Geranium</i> 'Rozanne'	Hardy Cranesbill Geranium			2 Gal.	Full Form (PPOY Winner)
PAT		<i>Perovskia atriplicifolia</i>	Russian Sage			C.G. #1	Full Form
<b>ORNAMENTAL GRASSES</b>							
PAL		<i>Pennisetum alopecuroides</i> 'Hameln'	Hameln Dwarf Fountain Grass			2 Gal.	Full Form
CAC		<i>Calamagrostis acutiflora</i> 'Karl Foerster'	Karl Foerster Feather Reed Grass			5 Gal.	Full Form
<b>IVY</b>							
CLB		<i>Clematis</i> 'Barbara Jackman'	Mauve & Violet Clematis			1 Gal.	Full Form

# Streetscape Enlargement Plan



NTS

2	Issued for Coordination	11/02/16
1	Preliminary Tree Pres. Plan	09/23/16
No.	Revision	Date

North:

Stamp:

Project:  
**Proposed Residential Development**  
 117 Forest Ave & 175 Catharine St. S  
 Hamilton, Ontario

Scale: **As Shown** Date: **Sept. 2016**  
 Drawn By: **A.N.** Checked By: **L.M.**

Drawing Title:  
**Landscape Plan**

Project No. **16158** Sheet No. **L2 of 3**

All information contained in these plans shall be checked by the contractor. All discrepancies shall be reported to the Landscape Architect (L.A.) before commencing with construction. All drawings have copyright and shall remain the property of the Landscape Architect. Copying or any reproduction in part or whole shall only be permitted with written consent of L.A. Drawings shall not be used for construction unless sealed & SIGNED. All change orders shall be prepared by the Landscape Architect and approved by the client. The contractor shall confirm the exact location of all existing utilities, structures, and shall assume liability for damage. **DO NOT SCALE DRAWINGS - PRELIMINARY FOR CONSTRUCTION - THESE DRAWINGS ARE NOT TO BE USED FOR CONSTRUCTION UNTIL COUNTERSIGNED BY L.A. ARCHITECT - SIGNED DATE**