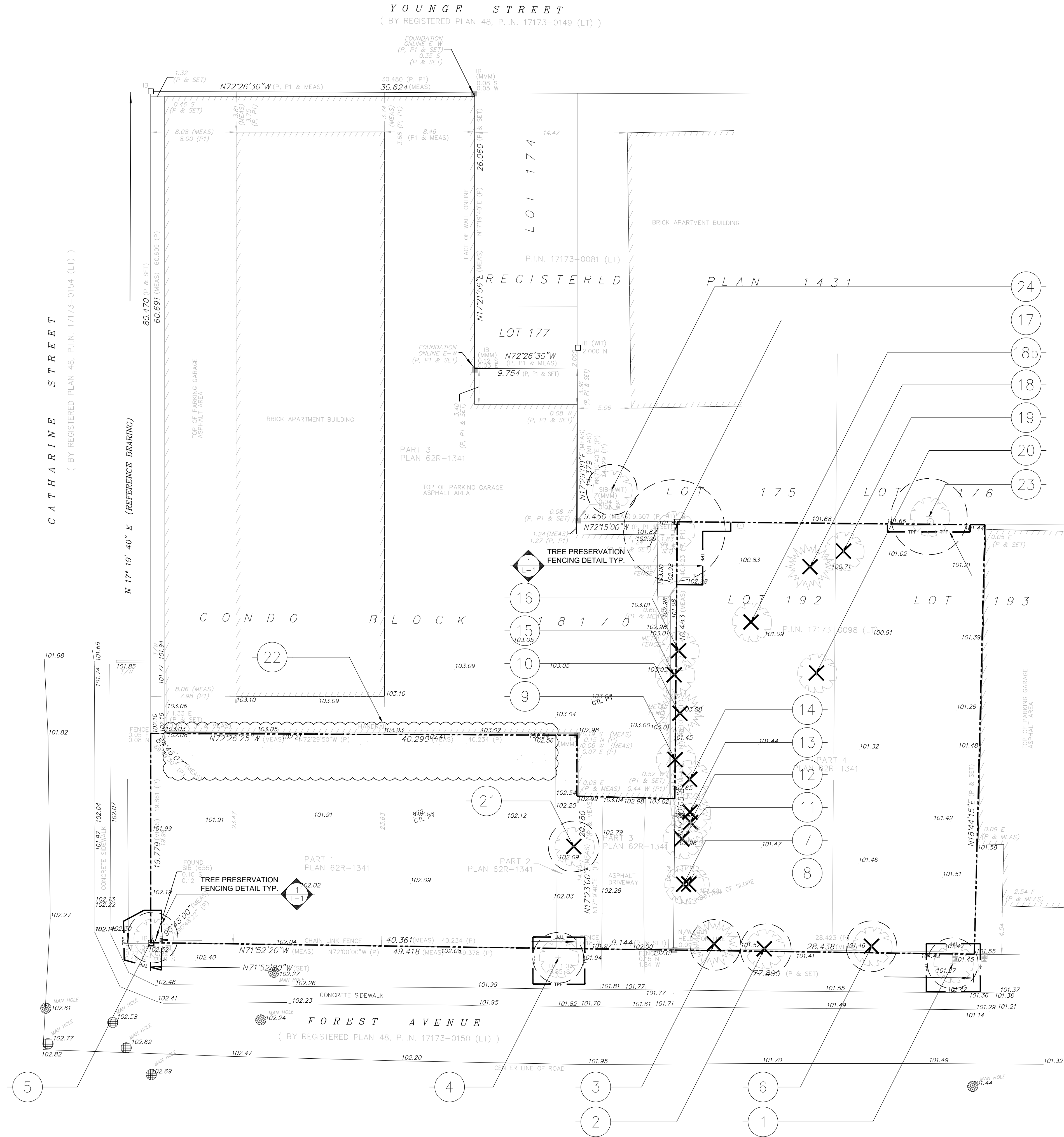


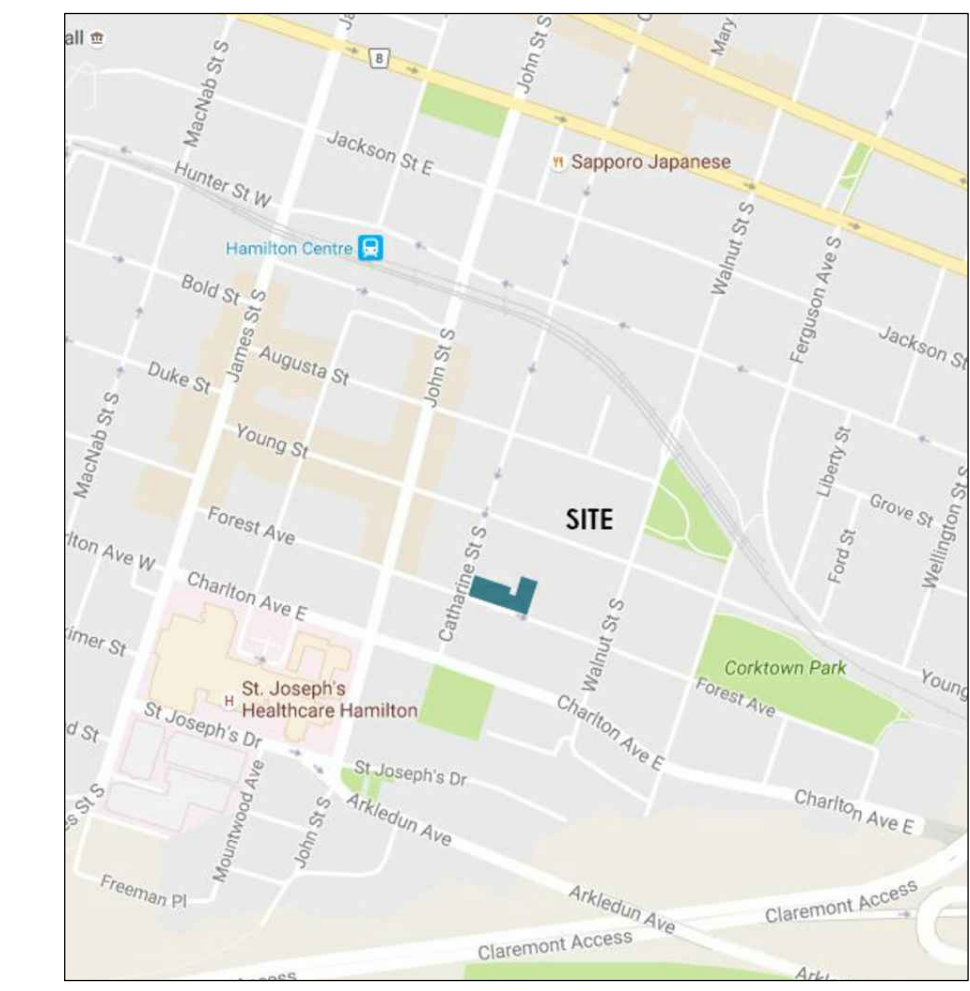
# Tree Preservation Plan

Scale 1:200

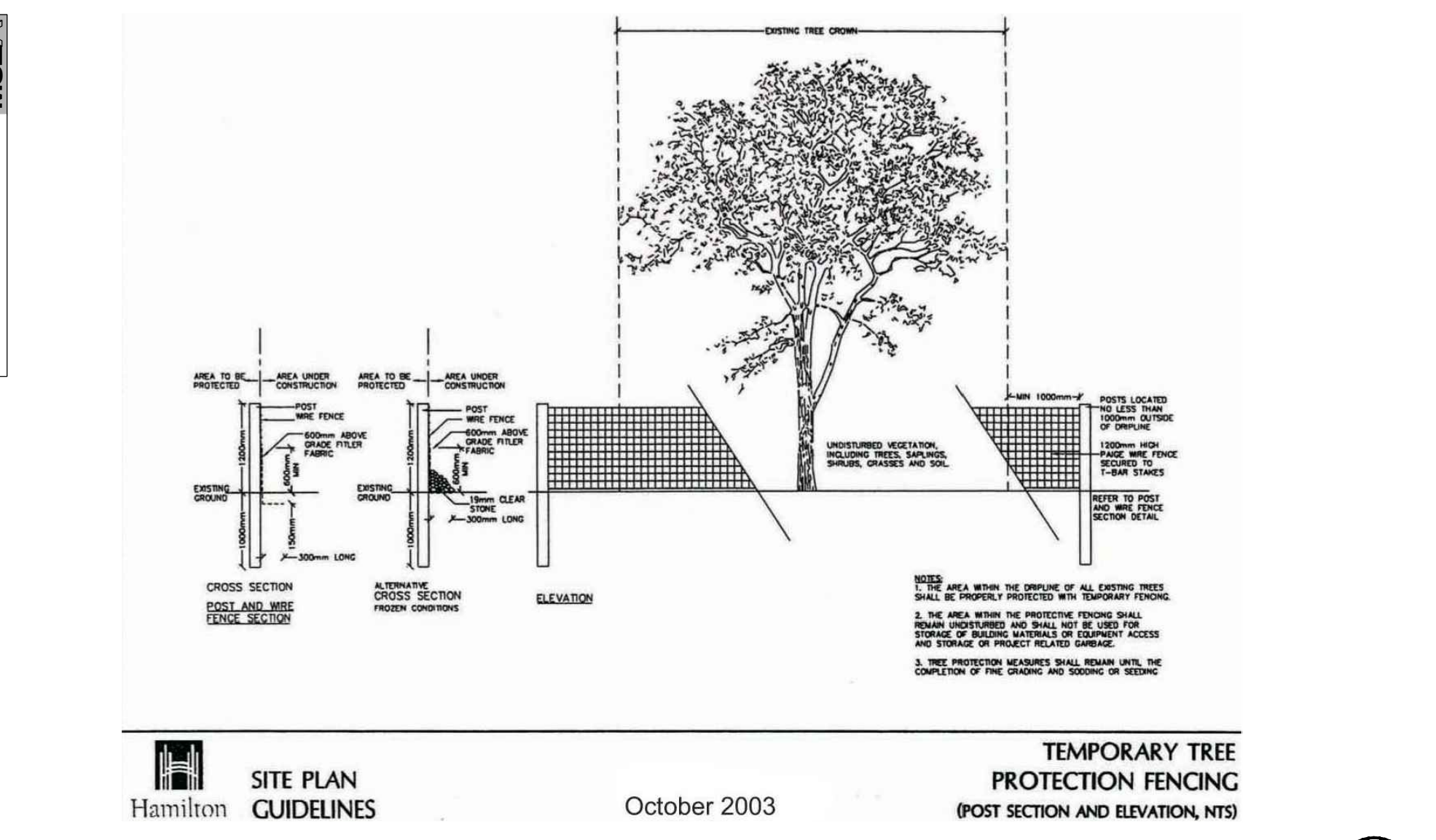


## Legend

- Existing Deciduous Tree to be Preserved
- Existing Coniferous Tree to be Preserved
- Existing Deciduous Tree to be Removed
- Existing Coniferous Tree to be Removed
- Tree Protection Zone (TPZ) refer to protection barrier details
- Tree Protection Fencing
- Property Line
- Detail Reference Key



Key Map



HAMILTON TREE PROTECTION BARRIER FENCING DETAIL TYP.

## Existing Tree Schedule

Table #1. Tree number (No.), species, diameter at breast height (DBH), comments, Condition Rating (CR) and Tree Category.

No.	Tree Species	DBH (cm)	Comments	CR (%)	TC	Recommend
#1	Manitoba maple	29-31-46	SE roadside	60	City	To be Preserved
#2	mulberry	24	SE roadside	65	City	To be Removed
#3	Siberian	14	SE roadside	65	City	To be Removed
#4	Manitoba maple	31-33-42	S roadside	60	City	To be Preserved
#5	Manitoba maple	28	SW roadside	60	City	To be Preserved
#6	Manitoba maple	31-33-42	S site	55	private	To be Removed
#7	ailanthus	44	S roadside	20	private	To be Removed
#8	Manitoba maple	18	S central	60	private	To be Removed
#9	ailanthus	34	S central	55	private	To be Removed
#10	Siberian elm	48-52	S central	60	private	To be Removed
#11-14	Norway maples	16, 18, 17 & 21	Central	65-70	private	To be Removed
#15	ailanthus	17	N central	60	private	To be Removed
#16	Manitoba maple	16	N central	65	private	To be Removed
#17	mulberry	78	N corner	60	private	To be Preserved
#18	Siberian elm	38	NE corner	60	private	To be Removed
#18b	Manitoba maple	14	NE exempt	50	private	To be Removed
#19	Manitoba maple	22-38-44	NE corner	60	private	To be Removed
#20	Manitoba maple	35	NE corner	65	private	To be Removed
#21	Norway maple	14	S exempt	50	private	To be Removed
#22+	Trees removed	NA	NW trees removed		private	Already Removed
#23	Manitoba maple	52-72	NE offsite	55	neighbour	To be Preserved
#24	sycamore maple	38	N offsite	60	neighbour	To be Preserved

LANDSCAPE ARCHITECTS  
  
**MARTON · SMITH**  
 170 The Donway W Suite 206, Toronto, Ontario, Canada. M3C 2G3  
 Tel. 416 492-9966 • Fax. 416 492-0426 • E-mail. msla@msla.ca

Architect:  
**mcCallumSather**  
 157 catharine st. N  
 hamilton, ON L8L 4S4  
 T 905.526.6700  
 mcallumsather.com

Client/Owner:  
  
**UrbanSolutions**  
 Planning & Land Development Consultants Inc.

2 Issued for Coordination 11/02/16  
 1 Preliminary Tree Pres. Plan 09/23/16

No. Revision Date

North:

Stamp:

Project:  
**Proposed Residential Development**  
 117 Forest Ave & 175 Catharine St. S  
 Hamilton, Ontario

Scale: 1:200 Date: **Sept. 2016**

Drawn By: **A.N.** Checked By: **L.M.**

Drawing Title:  
**Tree Preservation Plan**

Project No. **16158** Sheet No. **L1 of 3**

All information contained in these plans and shall be checked by the contractor. All discrepancies shall be reported to the Landscape Architect (L.A.) before commencing with construction. All drawings have copyright and shall remain the property of the Landscape Architect. Copying or any reproduction in part or whole shall only be permitted with written consent of L.A. Drawings shall not be used for construction unless sealed & SIGNED. All drawings shall be prepared by the Landscape Architect (L.A.) and shall be stamped and signed by the Landscape Architect (L.A.) before commencing with construction. The contractor shall confirm the exact location of all existing utilities, structures, and shall assume liability for damage. DO NOT SCALE DRAWINGS - PRELIMINARY FOR CONSTRUCTION - THESE DRAWINGS ARE NOT TO BE USED FOR CONSTRUCTION UNTIL COUNTERSIGNED BY L.A. ARCHITECT • SIGNED